

FarBo® DuoDrain outlets

DuoDrain outlets for roof drainage systems

Applications

- Outlets for use where a sealed interface is required at VCL level as well as roof level.

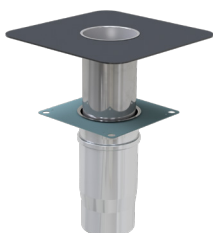
Key Features

- Both outlet sections have durable stainless steel spigot.
- Membrane is easily attached to the upper outlet with either heat or solvent welding - easy installation.
- Lower outlet available in plain flange or SBS - compatible with most types of VCL.
- Suitable for use in new build or refurbishment applications.
- A variety of leaf guards are available for the upper outlet.

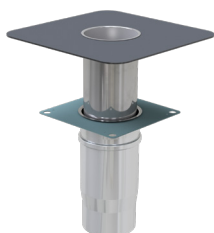
Primed plain flange on lower outlet

Code	Spigot size OD (mm)	To suit pipe size (mm)	Membrane type	Membrane size (mm)
FO-DUO-PF-75/PVC DK GY	75	82-95	Dark Grey PVC	350x350
FO-DUO-PF-75/PVC LT GY			Light Grey PVC	
FO-DUO-PF-75/SBS			Bituminous	500x500
FO-DUO-PF-110/PVC DK GY	110	120-128	Dark Grey PVC	350x350
FO-DUO-PF-110/PVC LT GY			Light Grey PVC	
FO-DUO-PF-110/SBS			Bituminous	500x500
FO-DUO-PF-125/PVC DK GY	125	135-143	Dark Grey PVC	350x350
FO-DUO-PF-125/PVC LT GY			Light Grey PVC	
FO-DUO-PF-125/SBS			Bituminous	500x500
FO-DUO-PF-160/PVC DK GY	160	170-178	Dark Grey PVC	350x350
FO-DUO-PF-160/PVC LT GY			Light Grey PVC	
FO-DUO-PF-160/SBS			Bituminous	500x500

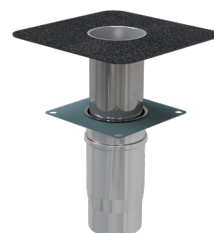
Spigot dimensions: Upper outlet - 400mm
Lower outlet - 280mm



Dark grey PVC flange



Light grey PVC flange



Bituminous flange

FIXFAST Ltd | Merlin House | Seven Mile Lane | Borough Green | Sevenoaks | Kent | TN15 8QY
T: 0845 450 7483 | F: 0845 450 7486 | E: info@fixfast.com | W: www.fixfast.com

*Fixfast is a trading name of FIXFAST Ltd which is a company registered in England & Wales with number 09481218.
 The registered office is Fixfast, Merlin House, Seven Mile Lane, Borough Green, Sevenoaks, Kent, United Kingdom TN15 8QY*

©Fixfast July 2017. All rights reserved. Due to a policy of continual development, Fixfast reserves the right to change product specification and descriptions without prior notice.

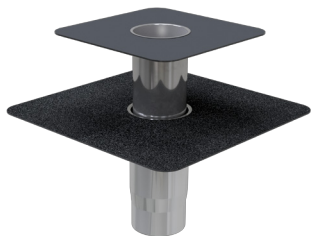


Certificate Number 10905
 ISO 9001: 2008
 ISO 14001: 2004
 BS OHSAS 18001: 2007

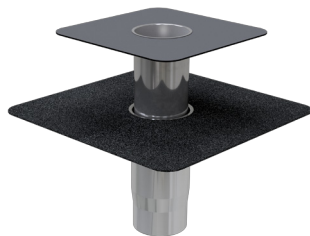
Bituminous SBS flange on lower outlet

Code	Spigot size OD (mm)	To suit pipe size (mm)	Membrane type	Membrane size (mm)
FO-DUO-PF-75/PVC DK GY	75	82-95	Dark Grey PVC	350x350
FO-DUO-PF-75/PVC LT GY			Light Grey PVC	
FO-DUO-PF-75/SBS			Bituminous	500x500
FO-DUO-PF-110/PVC DK GY	110	120-128	Dark Grey PVC	350x350
FO-DUO-PF-110/PVC LT GY			Light Grey PVC	
FO-DUO-PF-110/SBS			Bituminous	500x500
FO-DUO-PF-125/PVC DK GY	125	135-143	Dark Grey PVC	350x350
FO-DUO-PF-125/PVC LT GY			Light Grey PVC	
FO-DUO-PF-125/SBS			Bituminous	500x500
FO-DUO-PF-160/PVC DK GY	160	170-178	Dark Grey PVC	350x350
FO-DUO-PF-160/PVC LT GY			Light Grey PVC	
FO-DUO-PF-160/SBS			Bituminous	500x500

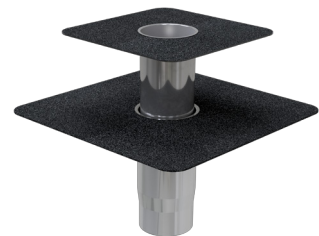
Spigot dimensions: Upper outlet - 400mm
Lower outlet - 280mm



Dark grey PVC flange



Light grey PVC flange



Bituminous flange

FIXFAST Ltd | Merlin House | Seven Mile Lane | Borough Green | Sevenoaks | Kent | TN15 8QY
T: 0845 450 7483 | F: 0845 450 7486 | E: info@fixfast.com | W: www.fixfast.com

*Fixfast is a trading name of FIXFAST Ltd which is a company registered in England & Wales with number 09481218.
 The registered office is Fixfast, Merlin House, Seven Mile Lane, Borough Green, Sevenoaks, Kent, United Kingdom TN15 8QY*

©Fixfast July 2017. All rights reserved. Due to a policy of continual development, Fixfast reserves the right to change product specification and descriptions without prior notice.



Certificate Number 10905
 ISO 9001: 2008
 ISO 14001: 2004
 BS OHSAS 18001: 2007