

FarBo® High performance PVC parapet outlet

High performance PVC parapet outlet for roof drainage systems

Applications

- Rainwater outlets specifically designed for use in through-wall applications or parapets

Key Features

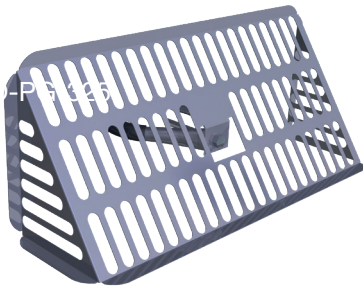
- High quality 600mm long spigot manufactured from durable plastic/polypropylene
- Factory bonded flange to match specific membrane material being used (material must be specified at time of order)
- Membrane attached to the outlet allows for easy installation
- Suitable for use in new build or refurbishment applications

Datasheet

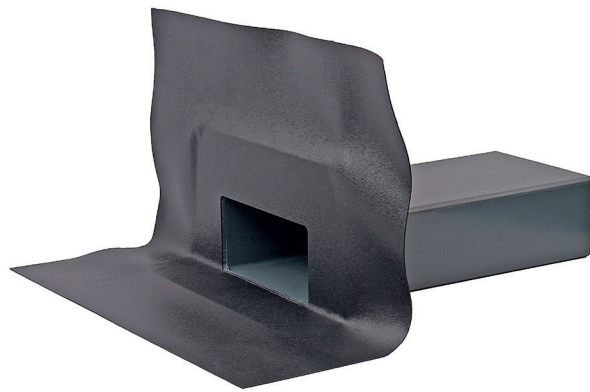
Document Reference: [DS-RDS-PARAPVC-7.17/01](#)

03 ROOF DRAINAGE SYSTEMS
FarBo® High performance PVC
parapet outlet

FarBo® High performance PVC parapet outlet



FO-PG-325



FO-PARA-SQ-200-PVC-DK GREY

Code	Membrane type	Membrane size	Flow rates (l/s)
FO-PARA-SQ-200-PVC DK GY	Dark grey PVC	500 x 500	2.02
FO-PARA-SQ-200-PVC LT GY	Light grey PVC	500 x 500	2.02

Code	Description
FO-PG-325	Extra large leaf guard to suit

* As recommended by UK design standard BS EN 12056 : 3-2000 with a water depth of 35mm.

If required, greater flow rates can be achieved if the outlets are sumped. Please enquire for details.

**FIXFAST Ltd | Merlin House | Seven Mile Lane | Borough Green | Sevenoaks | Kent | TN15 8QY
T: 0845 450 7483 | F: 0845 450 7486 | E: info@fixfast.com | W: www.fixfast.com**

*Fixfast is a trading name of FIXFAST Ltd which is a company registered in England & Wales with number 09481218.
The registered office is Fixfast, Merlin House, Seven Mile Lane, Borough Green, Sevenoaks, Kent, United Kingdom TN15 8QY*

©Fixfast July 2017. All rights reserved. Due to a policy of continual development, Fixfast reserves the right to change product specification and descriptions without prior notice.



Certificate Number 10905
ISO 9001: 2008
ISO 14001: 2004
BS OHSAS 18001: 2007