

# FarBo<sup>®</sup> SumpDrain rainwater outlets

SumpDrain rainwater outlets for roof drainage systems

## Applications

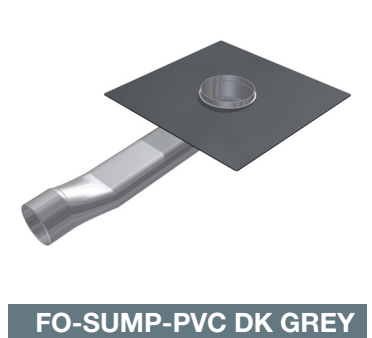
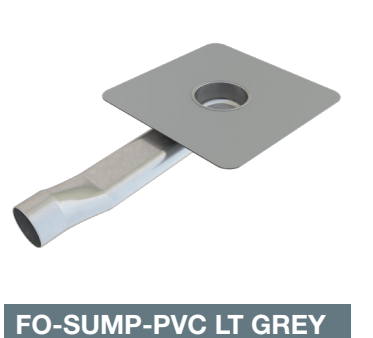
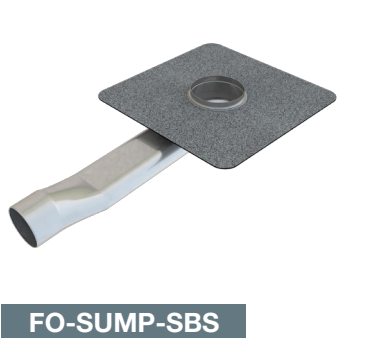
- Rainwater outlets specifically designed for use in through-wall applications or parapets

## Key Features

- High quality 650mm long spigot manufactured from stainless steel
- Factory bonded flange of suitable material to match specific membrane material being used (material must be specified at time of order)
- Membrane attached to the outlet allows for easy installation
- Suitable for use in new build or refurbishment applications

# FarBo® SumpDrain rainwater outlets

Code	Spigot diameter (mm)	Membrane attachment	
		Type	Size (mm)
FO-SUMP-110-SBS	110	Bituminous	500 x 500
FO-SUMP-110-PVC LT GREY	110	Light grey PVC	350 x 350
FO-SUMP-110-PVC DK GREY	110	Dark grey PVC	350 x 350



Outlets supplied with the FO-MONSOON leaf guard as standard

**The FO-SUMP outlet has an outstanding flowrate of 6.1l/s.**

As recommended by UK design standard BS EN 12056:3-2000 with a water depth of 35mm

For TPO, EPDM or other non-standard membranes, please contact our customer service team on 0845 450 7483  
Variety of leafguard options shown on separate FARBO LEAFGUARDS datasheet (must be ordered separately)

**FIXFAST Ltd | Merlin House | Seven Mile Lane | Borough Green | Sevenoaks | Kent | TN15 8QY**  
**T: 0845 450 7483 | F: 0845 450 7486 | E: info@fixfast.com | W: www.fixfast.com**

Fixfast is a trading name of FIXFAST Ltd which is a company registered in England & Wales with number 09481218.  
 The registered office is Fixfast, Merlin House, Seven Mile Lane, Borough Green, Sevenoaks, Kent, United Kingdom TN15 8QY

©Fixfast July 2017. All rights reserved. Due to a policy of continual development, Fixfast reserves the right to change product specification and descriptions without prior notice.



Certificate Number 10905  
 ISO 9001: 2008  
 ISO 14001: 2004  
 BS OHSAS 18001: 2007