

TriGrip™ rivets

Application

- Sheeting and cladding
- Flashings, gutter, facias, soffits
- Thin sheet applications

Key Features

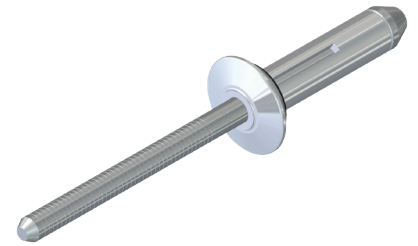
- Provides positive clamping force with no radial pressure or expansion
- Slotted body spreads to form three-pronged bearing surface
- Excellent material clamping across wide grip range
- Neoprene washer provides watertight seal
- Can be colour capped to match material
- Manufactured from aluminium

Datasheet

Document Reference: DS-FS-TGR-8.20/04

TriGrip rivets

Code	Body diameter (mm)	Drill size (mm)	Head diameter (mm)	Rivet length (mm)	Grip range (mm)
RTG-AA-5.2 x 18	5.2	5.3	11.7	17.5	1.3 - 4.8
RTG-AA-5.2 x 19				19	1.6 - 6.4
RTG-AA-5.2 x 23				22.2	4.7 - 9.5
RTG-AA-5.2 x 26				25.9	7.9 - 12.7
RTG-AA-5.2 x 29				28.6	11.1 - 15.9
RTG-AA-5.2 x 32				31.8	14.3 - 19.1

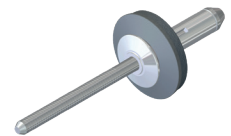


TriGrip rivets with aluminium bonded washer

Available assembled with A19 safeseal bonded washer for the following applications:

- Repair of misplaced fastener penetrations
- Jointing of fragile materials
- Where additional load spreading and weatherproofing is required

Code	Body diameter (mm)	Drill size (mm)	Head diameter (mm)	Rivet length (mm)	Grip range (mm)
RTG-AA-5.2 x 23 A19	5.2	5.3	11.7	23	1.7 - 6.6
RTG-AA-5.2 x 26 A19				25.5	4.9 - 9.7
RTG-AA-5.2 x 29 A19				29	8.1 - 12.9
RTG-AA-5.2 x 32 A19				32	11.3 - 16.1



RTG-AA-5.2

FIXFAST Ltd | Merlin House | Seven Mile Lane | Borough Green | Sevenoaks | Kent | TN15 8QY
T: 0800 304 7616 | F: 0845 450 7486 | E: info@fixfast.com | W: www.fixfast.com

*Fixfast is a trading name of FIXFAST Ltd which is a company registered in England & Wales with number 09481218.
 The registered office is Fixfast, Merlin House, Seven Mile Lane, Borough Green, Sevenoaks, Kent, United Kingdom TN15 8QY*

©Fixfast August 2020. All rights reserved. Due to a policy of continual development, Fixfast reserves the right to change product specification and descriptions without prior notice.



Certificate number 10905
 ISO 9001, ISO 14001
 OHSAS 18001