

# EdgeGuard™ Connections

For living roof systems

## Application

- Designed for use in variety of green or ballasted roof applications
- Specially designed connection for joining together lengths of EdgeGuard trim system.
- Pre-punched option that allows for varied roof designs

## Key Features

- Lightweight and robust
- Available powder coated in any colour
- Unique connection system
- Can be angled to suit the roof design

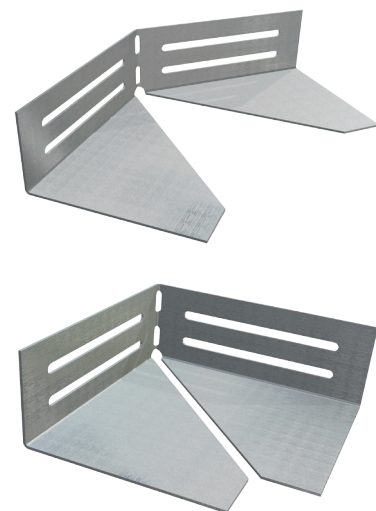
## Datasheet

Document Reference: DS-RP-EGC-7.17/01

04 ROOFTOP PRODUCTS  
EdgeGuard™ Connections  
for Living roof systems

## Corner Plate

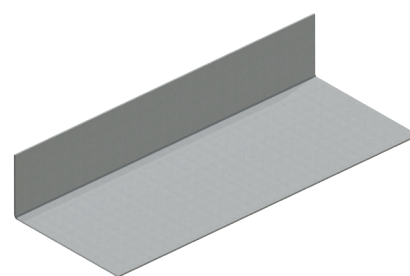
code	Description	Height (mm)	Width of base (mm)	Length of section (mm)
EG-C-50	Aluminium, pre-punched and profiled	45	95	250
EG-C-75		70	95	250
EG-C-100		95	95	250
EG-C-120		115	95	250
EG-C-150		145	145	350
EG-C-200		195	145	350
EG-C-250		245	195	350
EG-C-300		295	195	350



EG-C

## Connection Plate

code	Description	Height (mm)	Width of base (mm)	Length of section (mm)
EG-S-50	Profiled aluminium	45	95	250
EG-S-75		70	95	250
EG-S-100		95	95	250
EG-S-120		115	95	250
EG-S-150		145	145	350
EG-S-200		195	145	350
EG-S-250		245	195	350
EG-S-300		295	195	350



EG-S

**FIXFAST Ltd | Merlin House | Seven Mile Lane | Borough Green | Sevenoaks | Kent | TN15 8QY**  
**T: 0845 450 7483 | F: 0845 450 7486 | E: info@fixfast.com | W: www.fixfast.com**

*Fixfast is a trading name of FIXFAST Ltd which is a company registered in England & Wales with number 09481218.  
 The registered office is Fixfast, Merlin House, Seven Mile Lane, Borough Green, Sevenoaks, Kent, United Kingdom TN15 8QY*

*©Fixfast September 2017. All rights reserved. Due to a policy of continual development, Fixfast reserves the right to change product specification and descriptions without prior notice.*



Certificate Number 10905  
 ISO 9001: 2008  
 ISO 14001: 2004  
 BS OHSAS 18001: 2007