



JacBox[®]

Living roof systems

Application

- To create an inspection chamber around outlets and irrigation points in a living roof system

Key Features

- Manufactured from high grade, powder coated aluminium for excellent corrosion resistance.
- Base of JacBox inspection chamber allows drainage via channels cut in the base
- Standard or parapet bases available
- Three different sizes of interlocking mid sections to cater for different levels of build up
- Lockable lid section

Datasheet

Document Reference: DS-RP-JB-7.17/01

04 ROOFTOP PRODUCTS
JacBox[®] Living roof systems

JacBox® Living roof systems

code	Description	Height (mm)	Dimensions of base (mm) w x l
JB-B-STD	Standard base	50	300 X 300
JB-B-STD-300	Full slots	300	300 x 300
JB-B-PARA	Parapet base	100	300 x 300
JB-B-PARA-300	Full slots	300	300 x 300
JB-S-50	Interlocking section	50	300 x 300
JB-S-75	Interlocking section	75	300 x 300
JB-S-100	Interlocking section	100	300 x 300
JB-S-200	Interlocking section	200	300 x 300
JB-L-COVER	Locking cover with key	55	300 x 300



JB-B-STD



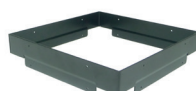
JB-B-PARA



JB-B-STD-300



JB-B-PARA-300



JB-S



JB-L-COVER

FIXFAST Ltd | Merlin House | Seven Mile Lane | Borough Green | Sevenoaks | Kent | TN15 8QY
T: 0845 450 7483 | F: 0845 450 7486 | E: info@fixfast.com | W: www.fixfast.com

*Fixfast is a trading name of FIXFAST Ltd which is a company registered in England & Wales with number 09481218.
 The registered office is Fixfast, Merlin House, Seven Mile Lane, Borough Green, Sevenoaks, Kent, United Kingdom TN15 8QY*

©Fixfast September 2017. All rights reserved. Due to a policy of continual development, Fixfast reserves the right to change product specification and descriptions without prior notice.



Certificate Number 10905
 ISO 9001: 2008
 ISO 14001: 2004
 BS OHSAS 18001: 2007