

PipePockets™

For sealing flat roof penetrations

Application

- For sealing flat roofing penetrations
- Particularly suitable for challenging or technical penetrations

Key Features

- Manufactured from polyurethane elastomer - absorbs stress and remains flexible
- Assembled on site and filled with fast setting solvent-free multi-use sealer - watertight within minutes
- When installed and filled with PPR-5000 sealer, PipePocket becomes a long lasting homogeneous seal
- Quick and easy installation, saving time and money
- Available in pre-fab, kit form and individual components
- Not suitable for use on timber decks due to possible shrinkage of the timber

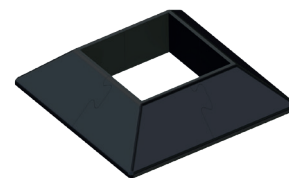
Datasheet

Document Reference: DS-RP-PP-8.19/02

04 ROOFTOP PRODUCTS
PipePockets™
For sealing flat roof penetrations

PipePockets™ For sealing flat roof penetrations

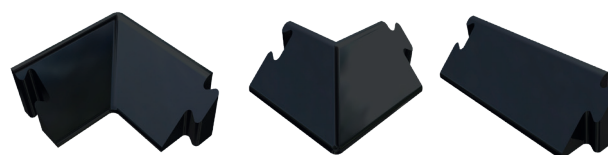
Code	Internal dimension (mm)	To suit max penetration (mm)
PP-100	100	60 x 60
PP-150	150	110 x 110
PP-200	200	160 x 160
		Minimum 20mm of sealer between penetration and inside of PipePocket



PP-100

Individual PipePocket components

Code	Description
PP-IC	Inside Corner
PP-OC	Outside Corner
PP-S-150	Straight 150mm
PP-S-250	Straight 250mm
PP-S-300	Straight 300mm



PPS-IC/PPS-OC/PP-S

Code	Description	
SEELEX BI	310ml cartridge	Apply with skeleton gun to bond PipePocket to roof surface, seal the tongue and groove joint, and interface between pipe or penetration and existing roof surface
PPR-5000	Part A 1kg	Pour contents of Part B into part A. Thoroughly mix for 3-5 mins using PPR-whisk with a drill
	Part B 3.6kg	
PPR-JUG	Jug for dispensing PPR-5000	
PPR-WHISK	Whisk for mechanically mixing two components	



SEELEX-BI



PPR-5000

FIXFAST Ltd | Merlin House | Seven Mile Lane | Borough Green | Sevenoaks | Kent | TN15 8QY
T: 0800 304 7616 | F: 0845 450 7486 | E: info@fixfast.com | W: www.fixfast.com

Fixfast is a trading name of FIXFAST Ltd which is a company registered in England & Wales with number 09481218.
 The registered office is Fixfast, Merlin House, Seven Mile Lane, Borough Green, Sevenoaks, Kent, United Kingdom TN15 8QY

©Fixfast August 2019. All rights reserved. Due to a policy of continual development, Fixfast reserves the right to change product specification and descriptions without prior notice.



Certificate number 10905
 ISO 9001, ISO 14001
 OHSAS 18001

PipePockets™ For sealing flat roof penetrations

PipePocket Kits

Code	Contents
PPK-150	8 x PP-OC, 8 x PP-S-150, 2 x Seelex BI
PPK-250	8 x PP-OC, 8 x PP-S-250, 2 x Seelex BI
PPK-300	8 x PP-OC, 8 x PP-S-300 2 x Seelex BI



PPR-JUG/WHISK

FIXFAST Ltd | Merlin House | Seven Mile Lane | Borough Green | Sevenoaks | Kent | TN15 8QY
T: 0800 304 7616 | F: 0845 450 7486 | E: info@fixfast.com | W: www.fixfast.com

*Fixfast is a trading name of FIXFAST Ltd which is a company registered in England & Wales with number 09481218.
The registered office is Fixfast, Merlin House, Seven Mile Lane, Borough Green, Sevenoaks, Kent, United Kingdom TN15 8QY*

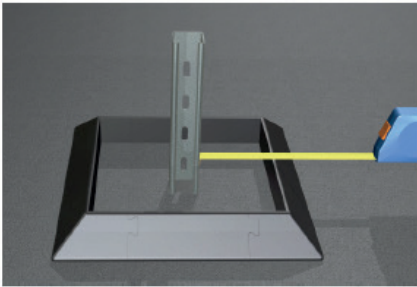
©Fixfast August 2019. All rights reserved. Due to a policy of continual development, Fixfast reserves the right to change product specification and descriptions without prior notice.



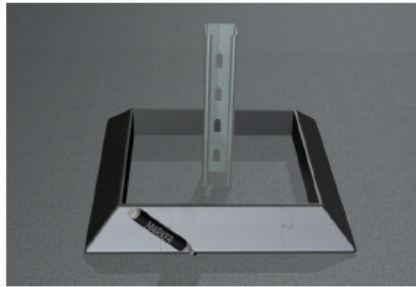
Certificate number 10905
ISO 9001, ISO 14001
OHSAS 18001

PipePockets™ Application guide

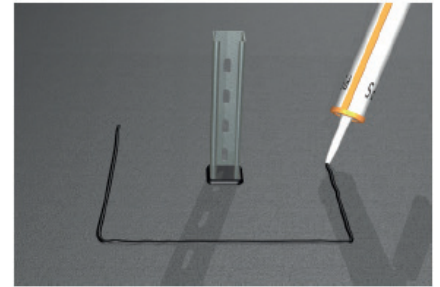
Ensure substrate is dry and clear of any loose gravel, dust granules or any foreign substances that can affect adhesion. The PPR 5000 (Parts A and B) should be kept at room temperature prior to use. Suitable for use on felt and asphalt systems; for any other applications, please consult our technical department or the membrane manufacturer for compatibility. PipePockets should not be installed or used in temperatures below 5°C. PipePockets are unable to accommodate any movement between finished base and the deck where installed.



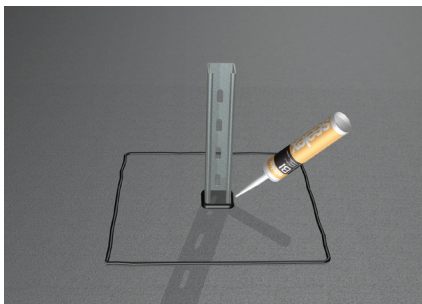
Place PipePocket with at least 20mm clearance between inside of pocket and penetration



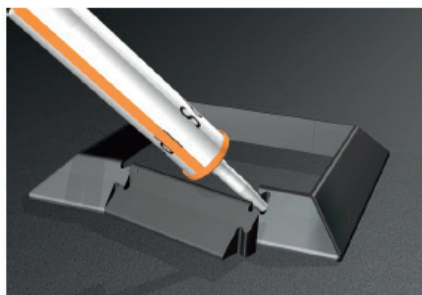
Mark around outside edge of PipePocket for reference



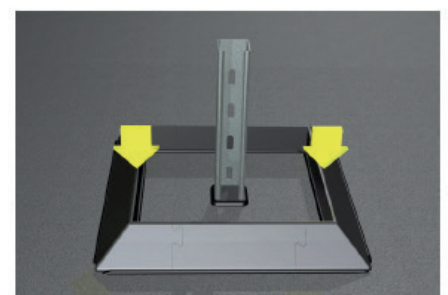
Seal base of penetration with LPS/Seelex BI and also apply a liberal bead to the substrate



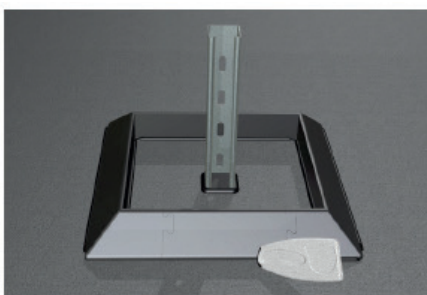
Ensure base of penetration is sufficiently sealed



Apply LPS/Seelex BI in the joint(s) of the PipePocket



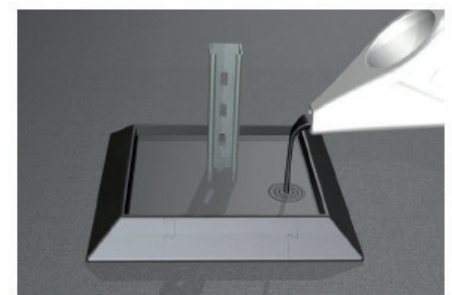
Set PipePocket in place. Apply equal pressure to ensure positive contact with substrate



Wipe away excess sealant.



Pour contents of PPR-5000 (Part B) into PPR-5000 (Part A) tin. Thoroughly mix the two components for 3-5 mins using PPR-WHISK with a power drill.



Dispense PPR 500 into assembled PipePocket using PPR-JUG until full.

FIXFAST Ltd | Merlin House | Seven Mile Lane | Borough Green | Sevenoaks | Kent | TN15 8QY
T: 0800 304 7616 | F: 0845 450 7486 | E: info@fixfast.com | W: www.fixfast.com

Fixfast is a trading name of FIXFAST Ltd which is a company registered in England & Wales with number 09481218. The registered office is Fixfast, Merlin House, Seven Mile Lane, Borough Green, Sevenoaks, Kent, United Kingdom TN15 8QY

©Fixfast August 2019. All rights reserved. Due to a policy of continual development, Fixfast reserves the right to change product specification and descriptions without prior notice.

